

SALVATERRAZZA®

THE ANTI-SEEPAGE BREATHABLE CONSOLIDATING AGENT

An anti-seepage, water-repellent consolidating agent. It protects crevices and cracks in floors and coverings of up to 1 mm, solving issues related to water seepage that cause further damage to the structure and to the underlying rooms.

CHARACTERISTICS AND ADVANTAGES

- A water-repellent sealer, it protects cracks in the material up to 1 mm wide
- Penetrates deeply
- Mineralises and consolidates the material
- Prevents water seepage which could cause structural damages to the surface
- Breathable and does not create a surface film



5 litres

1 litre



MATERIALS

PORCELAIN TILES, MARBLE AND STONE, AGGLOMERATES, CONCRETE, TUFF, TERRACOTTA, QUARRY TILES



FIELDS OF APPLICATION

- Application on outdoor surfaces affected by water seepage and humidity problems, especially in terraces and balconies
- Ideal for preventing erosion on floors and wall coverings due to weathering and sea spray
- It protects new surfaces against natural ageing and prevents water seepage problems
- In heritage buildings, it is ideal for mineralising non-cohesive surfaces and reducing flaking
- Counters water seepage also in case of damaged grout lines
- Physically effective against mould, algae and lichen build-up



INSTRUCTIONS

APPLICATION:

On a dry and clean surface (for deep cleaning, use the **FASE ZERO** detergent), apply **SALVATERRAZZA®** evenly on the entire surface using a fleece pad or a different application method, taking care to impregnate the gaps and fissures thoroughly. Before the product dries (within 10 minutes), remove any residues by dabbing the surface with a clean cloth, being careful not to leave any traces of the product. Applying an abundant amount of product does not improve its performance.

On absorbent materials such as natural stone, agglomerates, concrete and bricks, apply two coats of the product with an 8-hour interval in between, following the above-mentioned instructions. To speed up the process, the surface can be treated with a single-disc floor scrubber.

The surface can be walked on after 8 hours.

The protection takes effect after 24 hours.

Maintenance: use a diluted solution of **CLEANER PRO**.

FOR PROFESSIONAL USE ONLY:

spray the product (airless system) on vertical surfaces until they are saturated and use appropriate PPE, as specified in the safety data sheet.



WARNINGS

The product may brighten the material, so we recommend testing its reaction beforehand on a small area. Do not apply the product externally if rain is forecast.

Does not protect against acid aggression.

TOOLS FOR APPLICATION



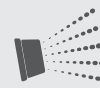
BRUSH



FLAT BRUSH



WAX
APPLICATOR



AIRLESS

For professional use only

The tools can be cleaned with de-aromatised white spirit.



TECHNICAL SPECIFICATION

A water-repellent and consolidating anti-seepage protective agent formulated with siloxane compounds and silicic acid esters in de-aromatised hydrocarbon solvent (density: 0.843 kg/l) for terracotta, quarry tiles, porcelain tiles, stone and agglomerates, concrete. Penetrates into small cracks of up to 1 mm, making them water-repellent. For floor and wall applications, both indoors and outdoors. Water-repellent action. Consolidating action. Anti-fouling action.

It does not form a surface film, resists UV radiation, does not yellow (as per the **ASTM G154** standard), is breathable (as per the **ASTM E96M** standard), has a consolidating action, exerts an anti-efflorescence action and prevents mould and moss from forming. Manufactured by an **ISO 9001**- and **ISO 14001**-certified company.

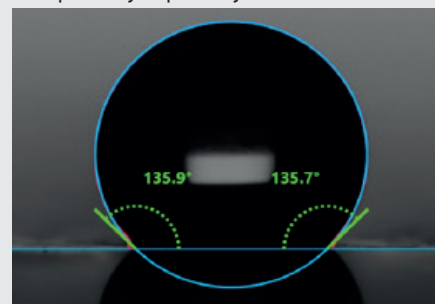


TECHNICAL TESTS

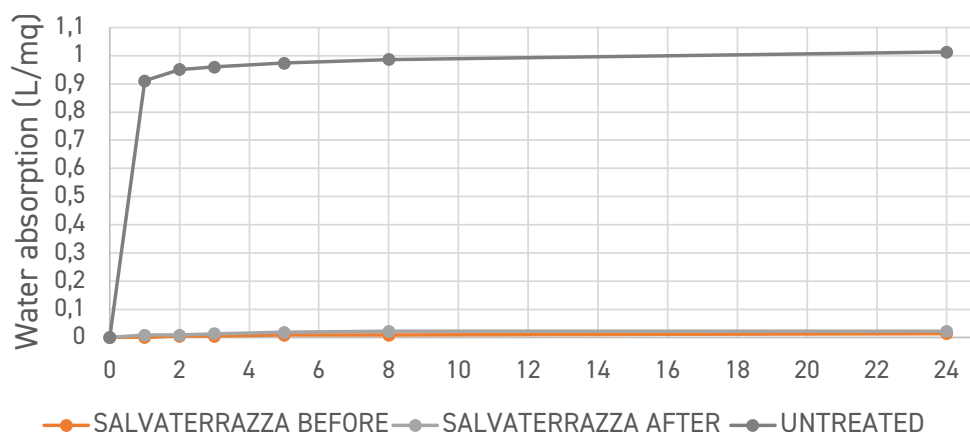
Water-repellent action verified according to UNI EN 15801:2010 - Determination of water absorption by capillarity. **SALVATERRAZZA®** reduces water absorption after 24 hours up to 97%.

Water-repellent effect by measuring the contact angle according to **UNI EN 15802** - Determination of static contact angle. Conventionally, a surface is hydrophobic when $\theta > 90^\circ$. **SALVATERRAZZA®** on an unpolished surface reaches angles greater than 130° .

Consolidating action verified through **UNI EN 14147:2003** - Determination of resistance to ageing by salt mist. The treatment with **SALVATERRAZZA** counters erosion caused by the sodium chloride solution (100 g/l) atomised at 35°C for 50 cycles.



ABSORPTION BY CAPILLARITY ON CARBONATE NATURAL STONE BEFORE AND AFTER AGEING BY SALT MIST UNI EN 15801

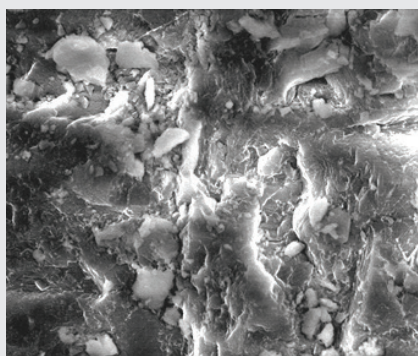


Breathability verified according to **ASTM E96M** - Water vapour permeability of materials. The treatment with **SALVATERRAZZA®** maintains the breathability above 90% compared to the untreated material.

Withstands UV radiation, does not yellow. Ageing accelerated through exposure to UV radiation as per **ASTM G154**. Colour variation assessed according to **UNI EN 15886:2010** - Colour measurement of surfaces. Does not alter the surface's original coefficient of friction.

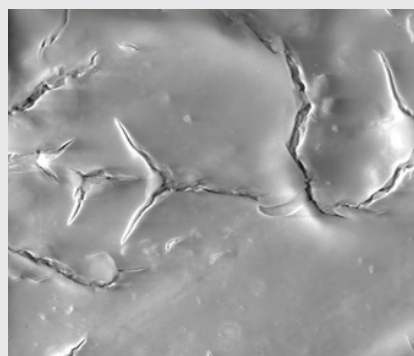
HOW IT WORKS

SALVATERRAZZA® is made up of siloxane compounds and silicic acid esters in de-aromatised hydrocarbon solvent. Penetrates deeply, consolidating the material and conferring it with a lasting water-repellent protection. Does not create a film and keeps the substrate breathable. The product always maintains high performance standards.



UNTREATED

Morphology of an untreated stone surface with parts of non-cohesive material.



TREATED WITH SALVATERRAZZA®

Morphology of a stone surface treated with SALVATERRAZZA® with uniformity and cohesion thanks to the applied treatment.



TECHNICAL FEATURES

COMPOSITION	Siloxane compounds and silicic acid esters in de-aromatised hydrocarbon solvent
APPEARANCE	Transparent colourless liquid
ODOUR	Characteristic
DENSITY	0.843 kg/L
STORAGE TEMPERATURE	From 0°C to 30°C
APPLICATION TEMPERATURE	Between 5°C and 30°C
DRYING TIME*	12 hours
CURING TIME*	24 hours
VOC (Volatile Organic Compounds) (Directive 1999/13/EC)	659.81 g/L

COVERAGE (1 litre)	
TERRACOTTA, STONE	10-15 m²
PORCELAIN TILES, QUARRY TILES	30 m²
Coverage shown is indicative and refers to single coats	

*Indicative time that varies depending on the environmental conditions and on the material

Packaging

1 litre: boxes of 12.

5 litres: boxes of 4

Available on request:

200-litre drums



SAFETY TIPS

Keep out of reach of children. Do not disperse into the environment after use. The product is classified as dangerous under Regulation 1272/2008 (CLP) and subsequent amendments and supplements.

For safety-related information, please refer to the safety information sheet available on the website www.filasolutions.com and carefully read the product's label.



download



FILA Industria Chimica S.p.A.
Via Garibaldi, 58 - 35018
S. Martino di Lupari (PD) - ITALY
t +39 049 9467300
e info@filasolutions.com

The recommended instructions and application procedures for our products are the result of accurate tests carried out in our laboratory. There are, however, certain factors that we cannot predict: the condition of the surface before the treatment, particularly rare or unspecified properties/finishes of the material, environmental conditions, and the professionalism of the user. This is why we recommend carrying out a preliminary test on the surface to be treated. FILA always guarantees the quality of its products, but it cannot assume any responsibility in the event of incorrect use.